

The background of the cover is a complex, abstract composition of overlapping geometric shapes. At the top, there are large, rounded triangles in shades of orange, blue, and grey. Below these, a horizontal band features a series of vertical bars of varying heights, colored in orange, blue, and grey, creating a barcode-like effect. The bottom portion of the cover is dominated by a world map, where the landmasses are filled with a dense, pixelated pattern of small, colorful squares in shades of orange, blue, and grey, while the oceans are a solid light blue.

Network CAMERA Quick Guide



Safety Instruction

These instructions are intended to ensure that user can use the product correctly to avoid danger or property loss.

The precaution measure is divided into “Warnings” and “Cautions”

Warnings: Serious injury or death may occur if any of the warnings are neglected.

Cautions: Injury or equipment damage may occur if any of the cautions are neglected.

	
Warnings Follow these safeguards to prevent serious injury or death.	Cautions Follow these precautions to prevent potential injury or material damage.



Warnings

- In the use of the product, you must be in strict compliance with the electrical safety regulations of the nation and region. Please refer to technical specifications for detailed information.
- Proper configuration of all passwords and other security
- Input voltage should meet both the SELV (Safety Extra Low Voltage) and the Limited Power Source with 12 VDC according to the IEC60950-1 standard. Please refer to technical specifications for detailed information.
- Do not connect several devices to one power adapter as adapter overload may cause over-heating or a fire hazard.

- Please make sure that the plug is firmly connected to the power socket. When the product is mounted on wall or ceiling, the device shall be firmly fixed.
- If smoke, odor or noise rise from the device, turn off the power at once and unplug the power cable, and then please contact the service center.



Cautions

- Make sure the power supply voltage is correct before using the camera.
- Do not drop the camera or subject it to physical shock.
- Do not touch sensor modules with fingers. If cleaning is necessary, use clean cloth with a bit of ethanol and wipe it gently. If the camera will not be used for an extended period, please replace the lens cap to protect the sensor from dirt.
- Do not aim the camera at the sun or extra bright places. Blooming or smearing may occur otherwise (which is not a malfunction), and affect the endurance of sensor at the same time.
- The sensor may be burned out by a laser beam, so when any laser equipment is in using, make sure that the surface of sensor will not be exposed to the laser beam.
- Do not place the camera in extremely hot, cold (the operating temperature shall be $-30^{\circ}\text{C} \sim +60^{\circ}\text{C}$), dusty or damp locations, and do not expose it to high electromagnetic radiation.
- To avoid heat accumulation, good ventilation is required for operating environment.

- Keep the camera away from liquid while in use.
- While in delivery, the camera shall be packed in its original packing, or packing of the same texture.
- Regular part replacement: a few parts (e.g. electrolytic capacitor) of the equipment shall be replaced regularly according to their average enduring time. The average time varies because of differences between operating environment and using history, so regular checking is recommended for all the users. Please contact with your dealer for more details.
- If the product does not work properly, please contact your dealer or the nearest service center. Never attempt to disassemble the camera yourself. (We shall not assume any responsibility for problems caused by unauthorized repair or maintenance.)

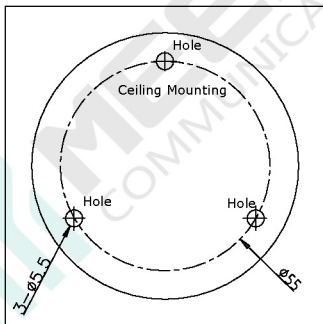
1.1 Installation of Bullet Camera



Both wall mounting and ceiling mounting are suitable for the bullet camera. Wall mounting will be taken as an example in this section. You can take steps of wall mounting for reference if ceiling mounting is adopted.

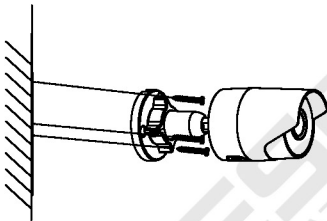
Steps:

1. Drill the screw holes in the wall according to the drill template.



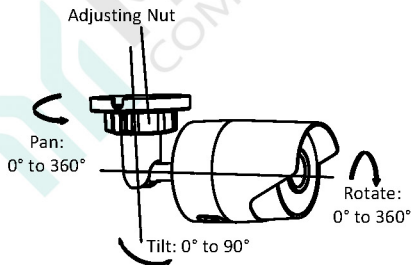
Drill Template

2. Route the corresponding cables.
3. Secure the camera to the wall with the supplied Screws.



Secure the Camera to the Ceiling

4. Connect the cables and power on the camera to view live view image.
5. Adjust the surveillance angle.



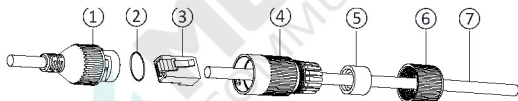
3-axis Adjustment

- 1). Loosen the adjusting nut.
- 2). Adjust the pan direction [0° to 360°].
- 3). Adjust the tilt direction [0° to 90°].
- 4). Rotate the camera [0° to 360°] to adjust the lens to the desired surveillance angle.
- 5). Tighten the adjusting nut to complete the installation.

1.2 Installation of Network Cable Water-proof Jacket (Optional)

Purpose:

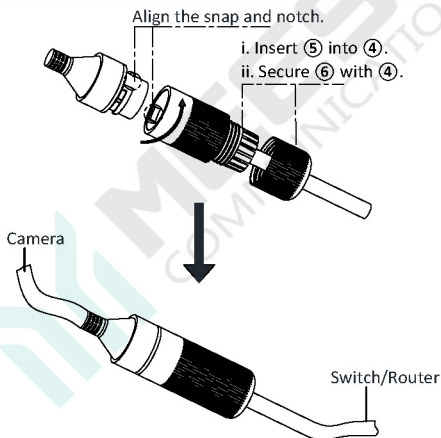
If the camera is installed outdoor, you can adapt the water-proof accessory for the network cable after the camera is secured on the installation surface.



Water-proof Accessory Components

No.	Components
1	Camera's Network Interface Socket
2	O-Type Gasket

No.	Components
3	Network Plug
4	Waterproof Endcap
5	Waterproof Rubber Gasket
6	Lock Nut
7	Network Cable from Router/Switch



Water-proof Accessory Installation

2 Setting the Network Camera over the LAN

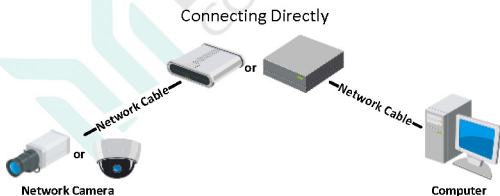
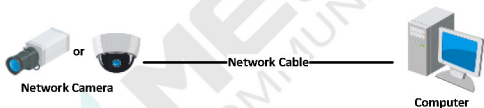
Note:

You shall acknowledge that the use of the product with Internet access might be under network security risks. For avoidance of any network attacks and information leakage, please strengthen your own protection.

If the product does not work properly, contact your dealer or the nearest service center for help.

2.1 Wiring

Connect the camera to network according to the following figures.



Connecting via a Switch or a Router

2.2 First time connection

Steps:

1. Power on the camera. Connect the camera to your computer or the switch/router which your computer connects to.
2. Input the default IP address into the address bar of the web browser, and press Enter to enter the activation interface.

Notes:

- The default IP address of the camera is 192.168.1.10.
 - Default User name is admin, no passwords
 - The computer and the camera should belong to the same subnet.
 - For the camera enables the DHCP by default, you need to use our DeviceManage to search the IP address.
 - You can download our DeviceManage from http://www.meeso.cn/a/xiazaipindaodanyemian/Software_download/
3. Please create a strong password after first time login



STRONG PASSWORD RECOMMENDED— We highly recommend you create a strong password of your own choosing (using a minimum of 8 characters, including upper case letters, lower case letters, numbers, and special characters) in order to increase the security of your product. And we recommend you reset your password regularly, especially in the high security system, resetting the password monthly or weekly can better protect your product.

2.3 Modify the IP Address

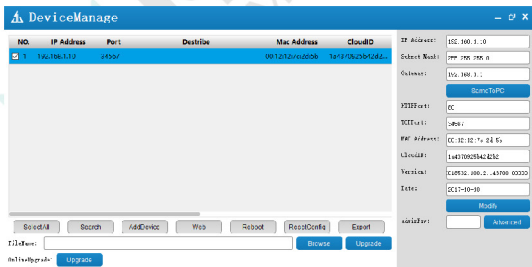
Purpose:

To view and configure the camera via LAN (Local Area Network), you need to connect the network camera in the same subnet with your PC.

Use the DeviceManage software to search and change the IP address of the device.

Steps:

1. Run the DeviceManage software.
2. Search and select a device.
3. Change the device IP address to the same subnet with your computer by either modifying the IP address manually or click **SameToPC**.
4. Enter the passwords of admin and click **Modify**.



3 Accessing via Web Browser

System Requirement:

Operating System: Microsoft Windows XP SP1 and above version

CPU: 2.0 GHz or higher

RAM: 1G or higher

Display: 1024×768 resolution or higher

Web Browser: Internet Explorer 8.0 and above version, Apple Safari 5.0.2 and above version, Mozilla Firefox 5.0 and above version and Google Chrome 18 and above version

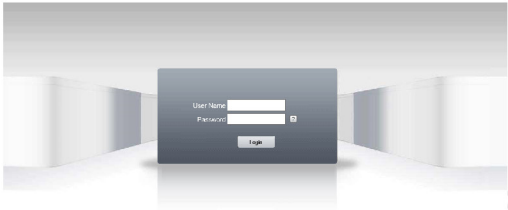
Steps:

1. Open the web browser.
2. In the browser address bar, input the IP address of the network camera, and press the **Enter** key to enter the login interface.

Note:

- The default IP address is 192.168.1.10. You are recommended to change the IP address to the same subnet with your computer.
3. Input the user name and password.
The admin user should configure the device accounts and user/operator permissions properly. Delete the unnecessary accounts and user/operator permissions.

4. Click **Login**.



Login Interface

5. Install the plug-in before viewing the live video and managing the camera. Follow the installation prompts to install the plug-in.

Note:

You may have to close the web browser to finish the installation of the plug-in.

6. Reopen the web browser after the installation of the plug-in and repeat steps 2 to 4 to login.

Note:

For detailed instructions of further configuration, please refer to the user manual of network camera.

4 Operating via Mobile App

Purpose:

Xmeye is an application for mobile devices. With the App, you can view live image of the camera, receive alarm notification and so on.

Note:

You can download our App from App Store for iPhone or Google Play for Android phone.

4.1 Enable Cloud on the Camera

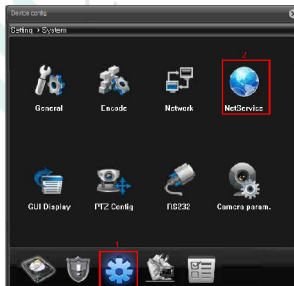
Purpose:

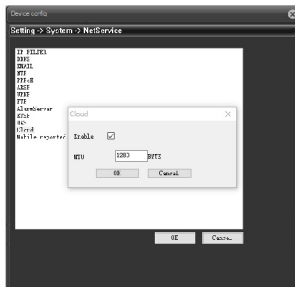
Cloud function enables you to connect to the device without IP address or DDNS, it's based on P2P Technology.

You can enable the service through software or web browser.

Steps:

1. Login to the camera by IE browser
2. Go to DeviceCfg>>>System>>>NetService





3. Click Cloud, Enable it and click OK to save.

Note:

Cloud function supports only P2P connection, it doesn't support cloud storage.

4.2 Download Xmeye on your mobile

Steps:

1. Download and install the Xmeye app by searching "Xmeye" in App Store or Google Play™.
2. Launch the app and register for a user account.
3. Log in Xmeye app after registration.

4.3 Adding Camera to Xmeye

Steps:

1. Use a network cable to connect the camera with a router if the camera does not support Wi-Fi.

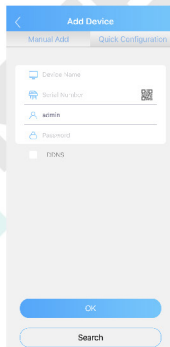


Connect a Router

Note:

After the camera connects to the network, please wait one minute before any operation on the camera using Xmeye app.

2. In the device list, tap “+” on the upper-right corner, enter a device name for your camera, then scan the QR code of the camera to add the camera. It's required to enter user name and passwords for the camera to login.



Note:

You can find the QR code on the camera label or on the label of the package.

Scan the Bar Code to add the camera to your App.

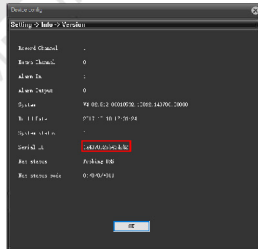
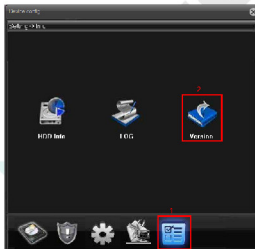


Note:

If the QR code is missing or too blur to be recognized, you can also add the camera manually by inputting the camera's serial number.

- Find the serial number of your device by IE browser.

Go to DeviceCfg>>>Info>>>Version



5 More Supports

For more supports of installation, please contact Meeso local distributors for assistance.

Or you may visit our official website to learn more about your product.

www.meeso.cn



For a safer and better world



Meeso Communications Co., Ltd.

Add: Bld B, Hi-Tech Incubator, No. 1001 XueYuan Avenue, Shenzhen, China

Phone: +86 755 3662 2324 Fax: +86 755 3662 2324

Mail: support@meeso.cn Web: www.meeso.cn